



Advanced Hydronics



Modular Penthouse



Theodore Levin U.S. Courthouse

Project Highlights

Recently listed on the National Register of Historical Places, the Theodore Levin U.S. Courthouse, was completed in March 1934. The 629,000 sq. ft., ten story building occupies a full city block in downtown Detroit and serves the District Court and supporting federal agencies. This historic Neo-Classical building features marble floors, bas-relief sculptures, as well as the legendary "Million Dollar Courtroom".



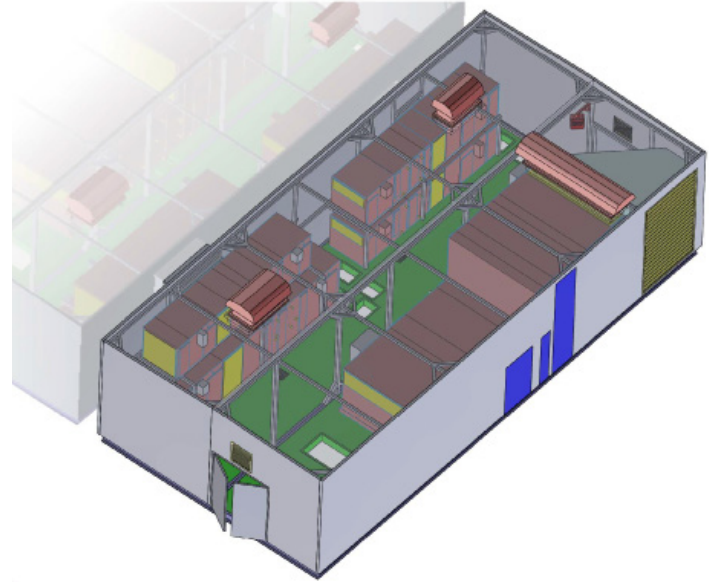
When the time came to update the facilities HVAC system in early 2017, the contractors responsible looked to TMI Climate Solutions to provide them with a modular penthouse that could supply the building, while preserving the historical character.

Challenge

Conversations began back in late 2014, with the project's architect inquiring if TMI could manufacturer a modular penthouse incorporating Centria Formawall panels. The architect needed the penthouse to match the horizontal, vertical and color profile of the existing building. They came to TMI since the engineer and architect had come to the conclusion that a roof installed modular penthouse would be best to enclose the equipment that the engineering team did not want to install inside this historic building.

Originally TMI was asked only to provide an "empty" penthouse, but in an effort to avoid added on site costs and logistical nightmares, the project team decided that it would be best to have the equipment and duct work installed by TMI in the factory.

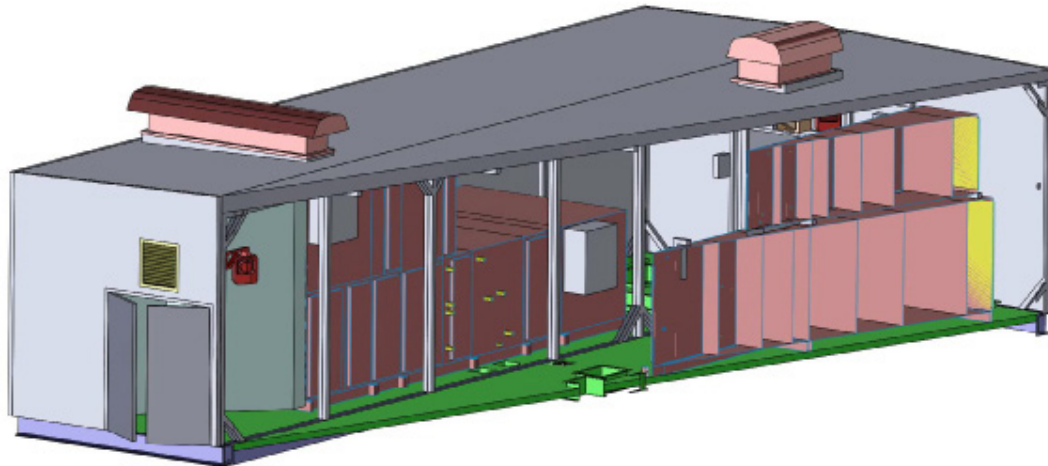




Solution

TMI worked with our Reps at Thermalnetics, the engineer, architect, and other contractors to provide preliminary layouts that would fit the desired footprint. Several revisions were made prior to the bidding phase of the project.

In the end TMI's Solution was to provide (2) Modular Penthouses that housed packaged air handling equipment, provided by Thermalnetics (Rep). TMI installed this equipment at our factory and partnered with the mechanical and sheet metal contractors to provide pre-installed duct work to prepare these penthouses for a fast install and to avoid any extra work to the units once installed.



If you are interested in learning more about TMI Climate Solutions [Modular Penthouses](#) please contact your local TMI Rep or contact us directly at:

TMI Climate Solutions

Headquarters: 200 Quality Way • Holly, MI 48442 • P:888-727-8722 • F:810-694-5804

TMI Climate Solutions Canada: 117 Hymus Boulevard • Point-Claire QC H9R 1E5 • P:514-426-8642

TMICLIMATESOLUTIONS.COM

MA•CS•CAH•MPH•GOV•19•01•01